



# **ATLANTA STREETCAR EAST (SCE) EXTENSION**

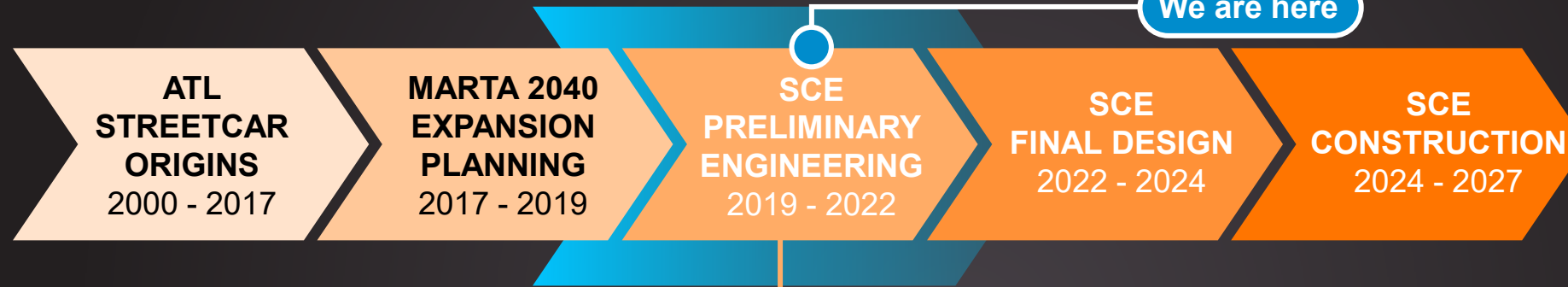
**Riders Advisory Council**



# PROJECT BACKGROUND:



# PROJECT BACKGROUND: SCE PRELIMINARY ENGINEERING (2019–2022)



## Technical Analysis

- Validated work by COA & ABI
- Finalized route
- Verified existing Vehicle Maintenance Facility (VMF) capacity
- Presenting proposed:
  - Stop locations
  - Alignment and cross sections
  - In-street space allocation

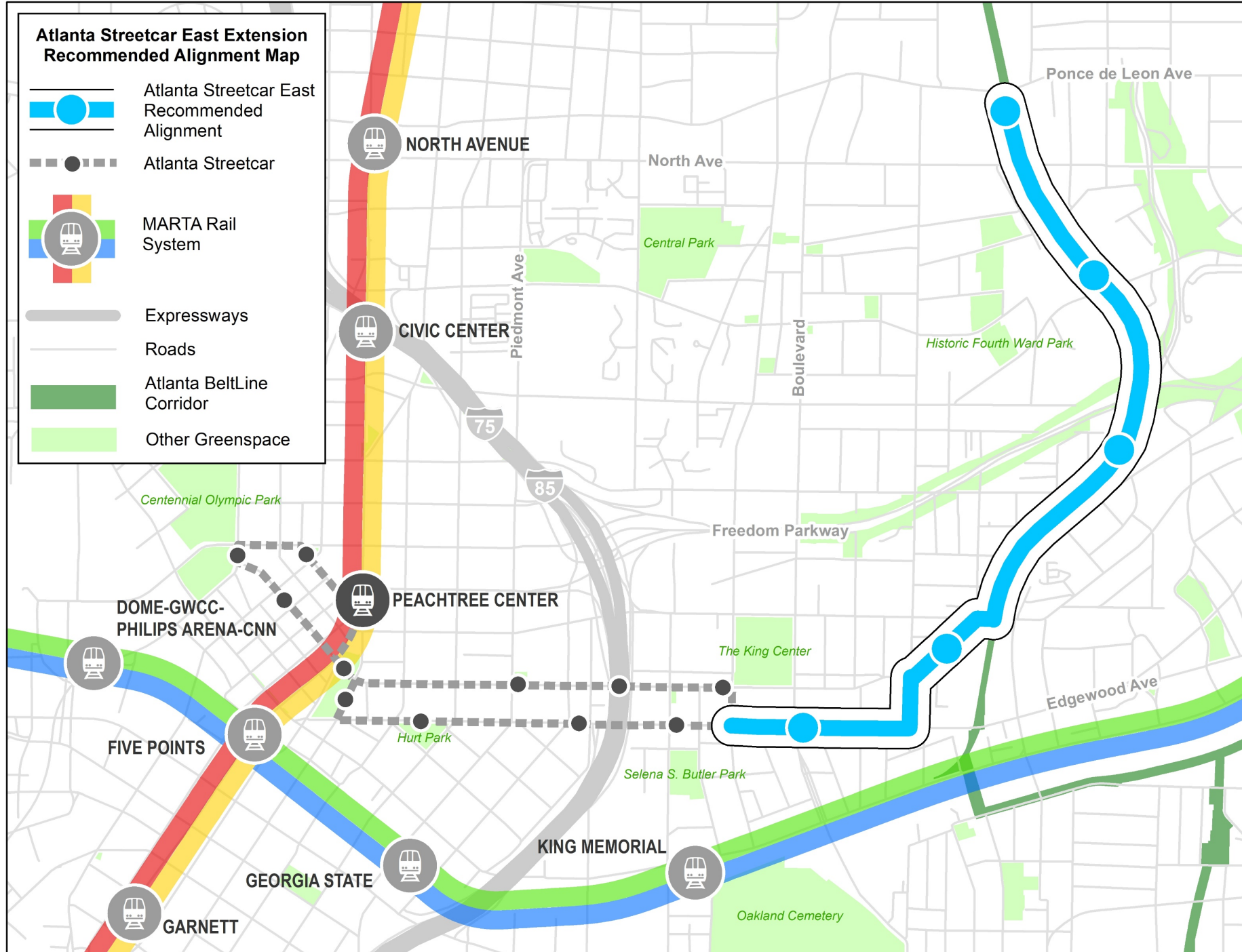
## What We're Evaluating/Quantifying

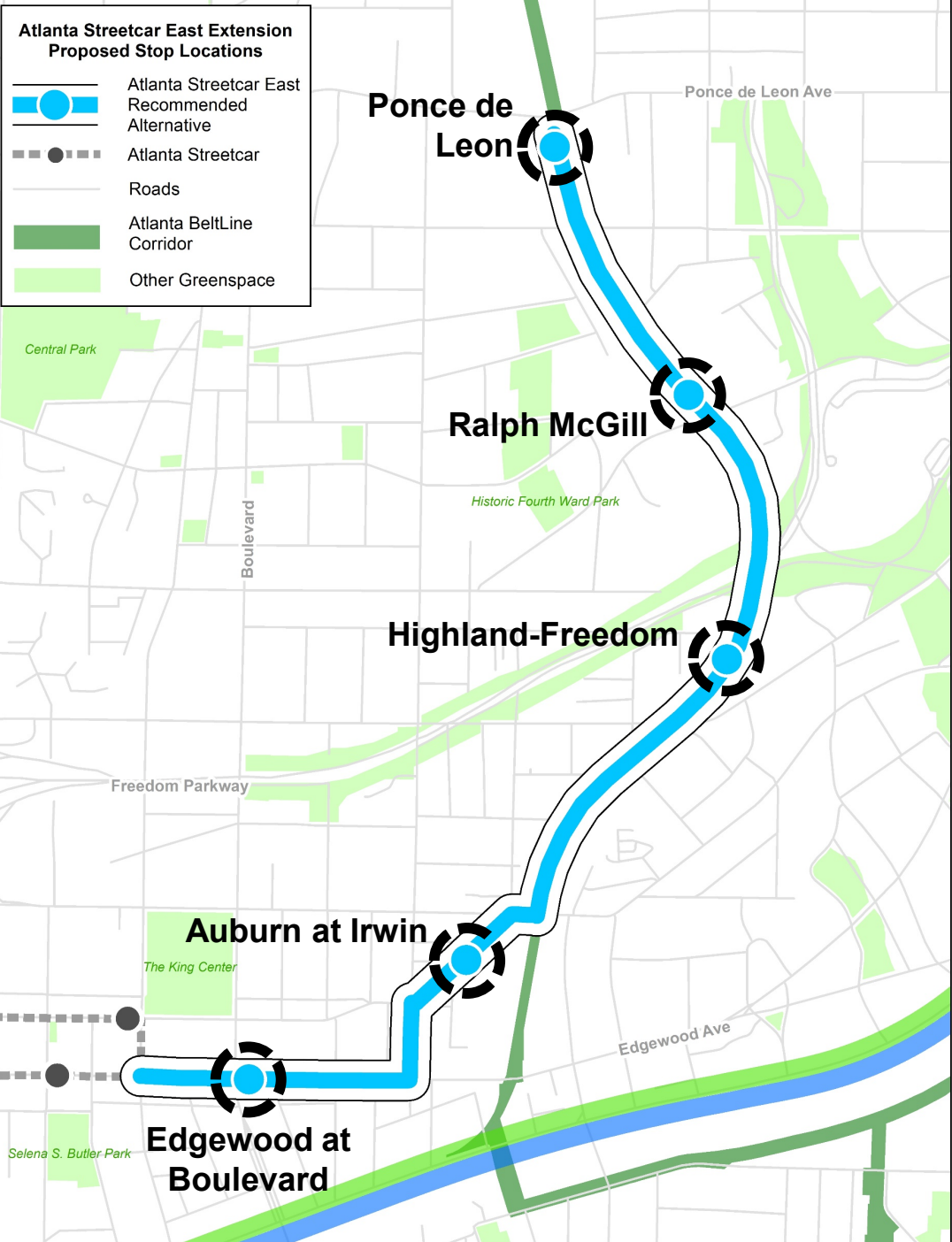
- Parking, loading and unloading impacts
- Bike turning movements, transition from other bike facilities
- Locations for traction power substations and Overhead Catenary poles
- Safety: cross track deterrence

# RECOMMENDED ALIGNMENT

## Points of interest:

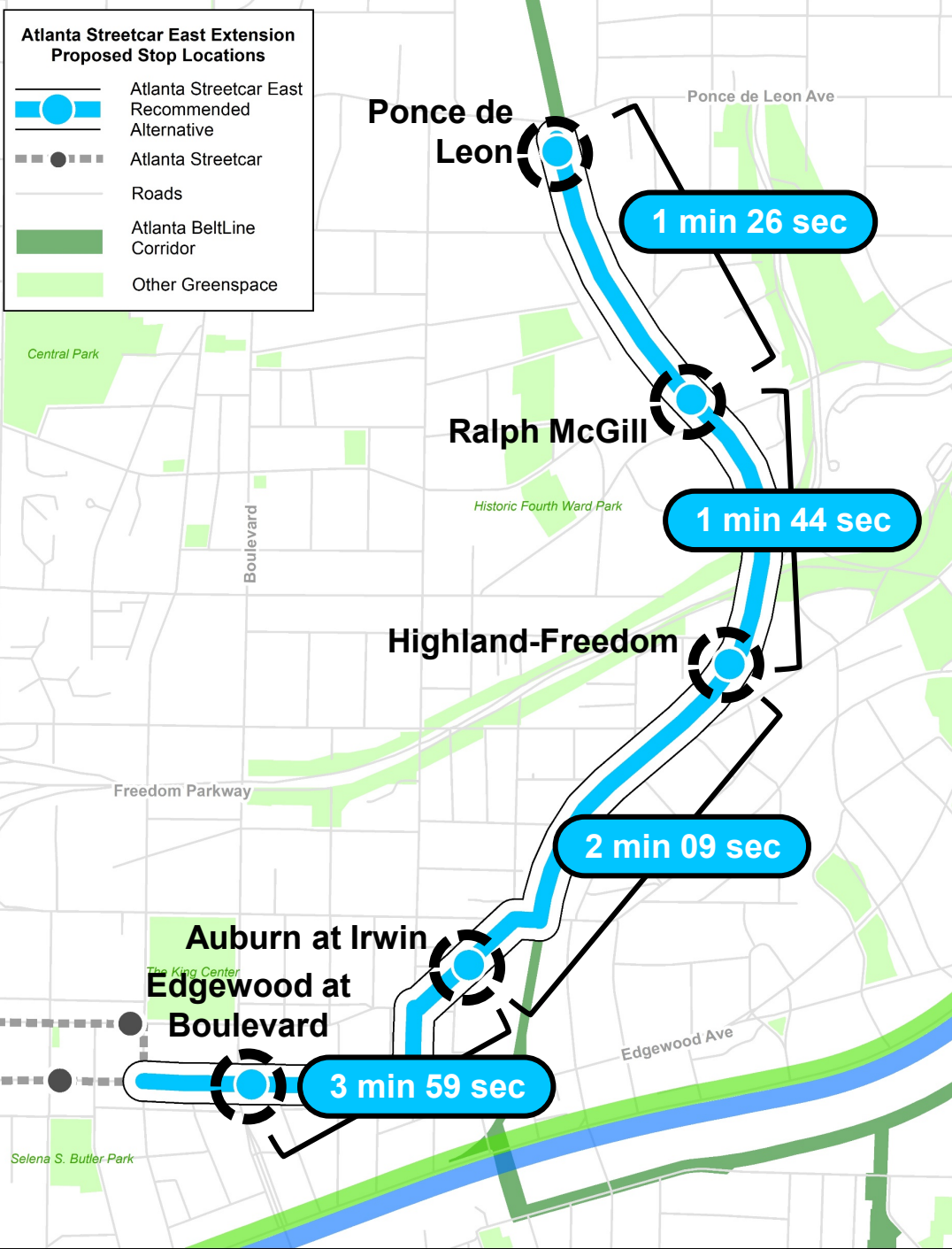
- Edgewood Commercial District
- Irwin/BeltLine commercial node
- Carter Center
- Inman Quarter
- H4WP and Skate Park
- PCM





## PROPOSED STOP LOCATIONS: PLACEMENT FACTORS

- Ongoing and projected development/growth
- Consideration of existing bus routes
- Higher density populations within five-minute walkshed of proposed stop locations
- Placemaking, potential art siting and other amenities
- Safety and security



# PROPOSED STOP LOCATIONS

## Benefits of Proposed Stop Locations

- Overall 25 MPH operation speed
- 10-15 minute headways (arrival intervals) to provide efficient cross-town connections
- Assumes the existing Downtown Streetcar's span of service for direct connection to heavy rail
- Operates under the assumption of the removal of the current 5 minute 'layover' at Centennial Olympic Park
- Capacity of moving 360 people/hour at 15 minute headways

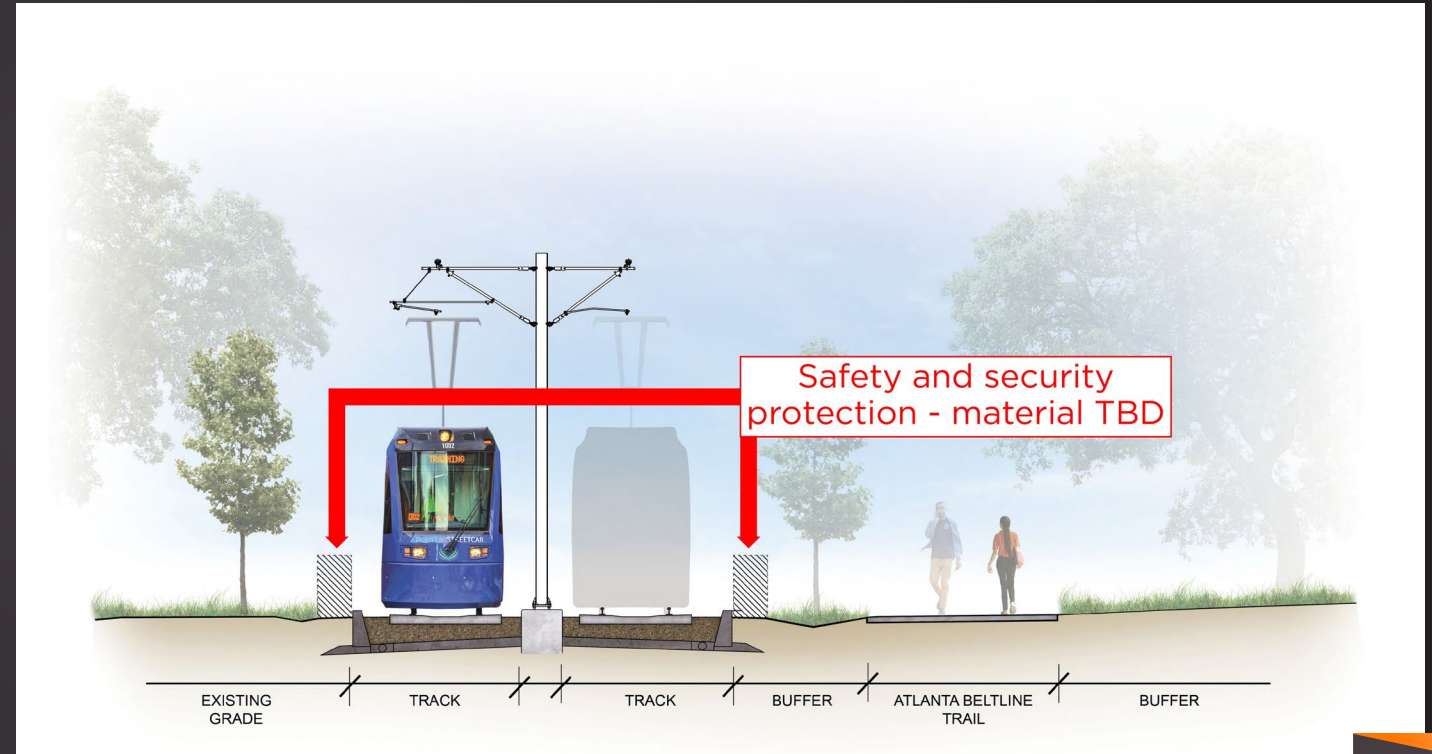
# ATLANTA BELTLINE EASTSIDE CORRIDOR CROSS SECTION VIEW

## Detail designs will consider:

- All movements at Irwin Street
- Track crossings at corridor access points
- Deterrence of cross-track movements where undesirable via combination of barriers, walls, fencing, or vegetation

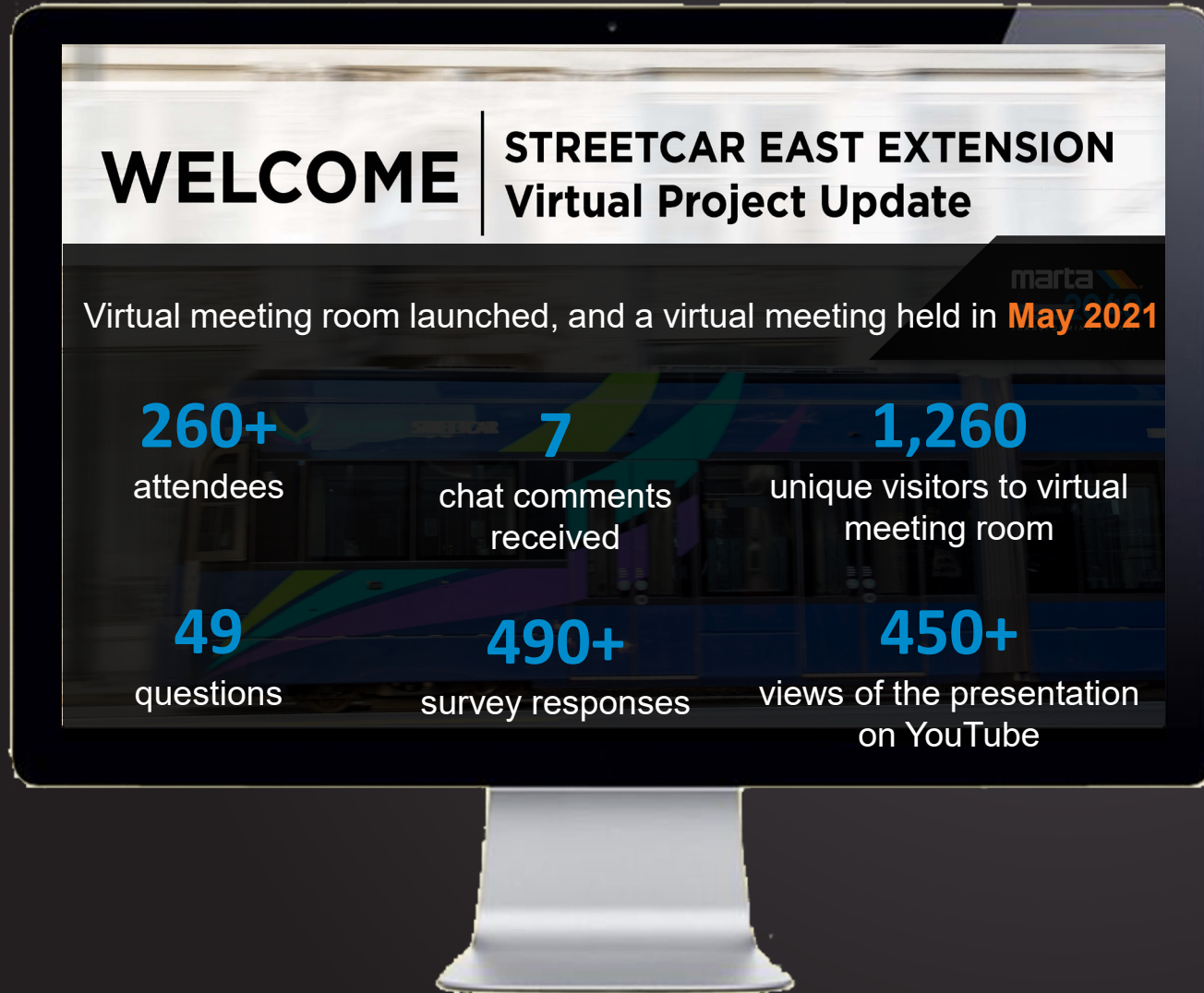
## Design Impacts:

- More controlled access to developments
- Impacts to viewshed from trail



ATLANTA BELTLINE EASTSIDE CORRIDOR

# Public Engagement May 27 - Results



## Community Priorities:

- Preserving safety and access to Edgewood neighborhood and businesses
- Project funding and schedule
- Reducing current traffic congestion in the Edgewood community



## Summer Survey Takeaways

### Common Concerns from the Public:

- Increasing access to activity centers for pedestrians and cyclists
- Preserving the existing environment on the BeltLine
- Improving travel times and reliability of current Streetcar



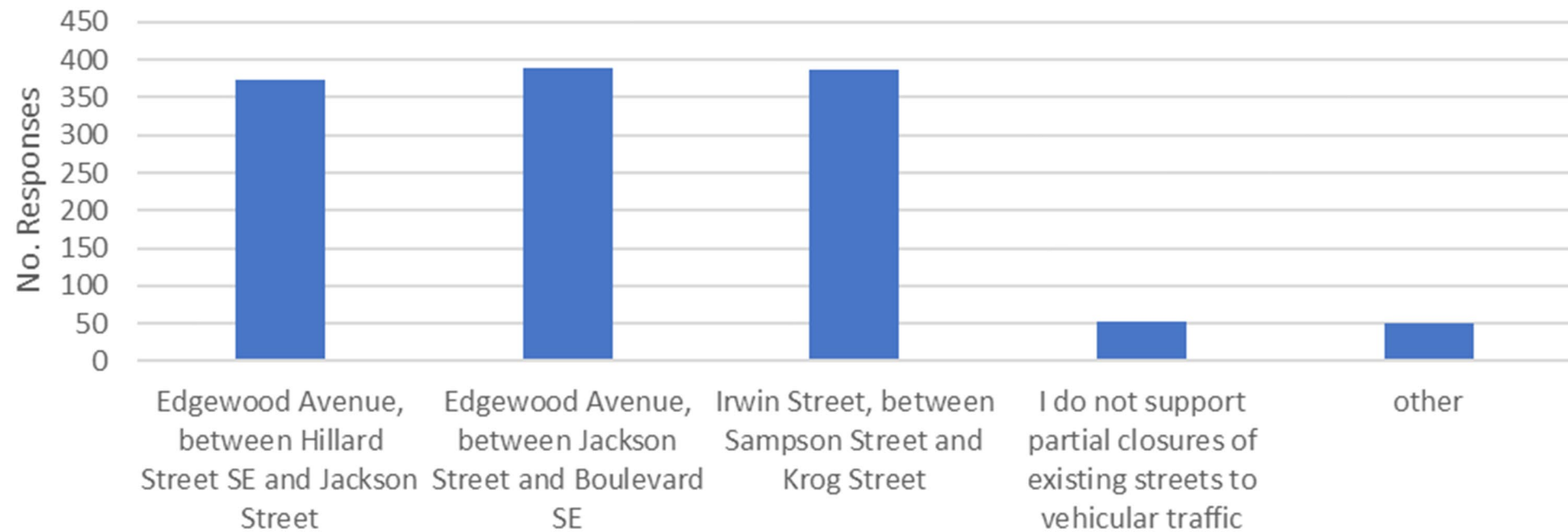
## Summer Survey Takeaways

- General agreement with proposed stop locations with emphasis on access to key destinations
- Validation of high-priority stations at PCM, Krog Street Market and heavily traveled cross streets (Highland Ave and Ralph McGill)
- Preference for the Cycle Track Bike Option over the Extended Bike Couplet
- Strong emphasis in safety for cyclists and pedestrians
- Major concern for preservation of greenspace and outdoor environment
- Interest in improvements to current streetcar service



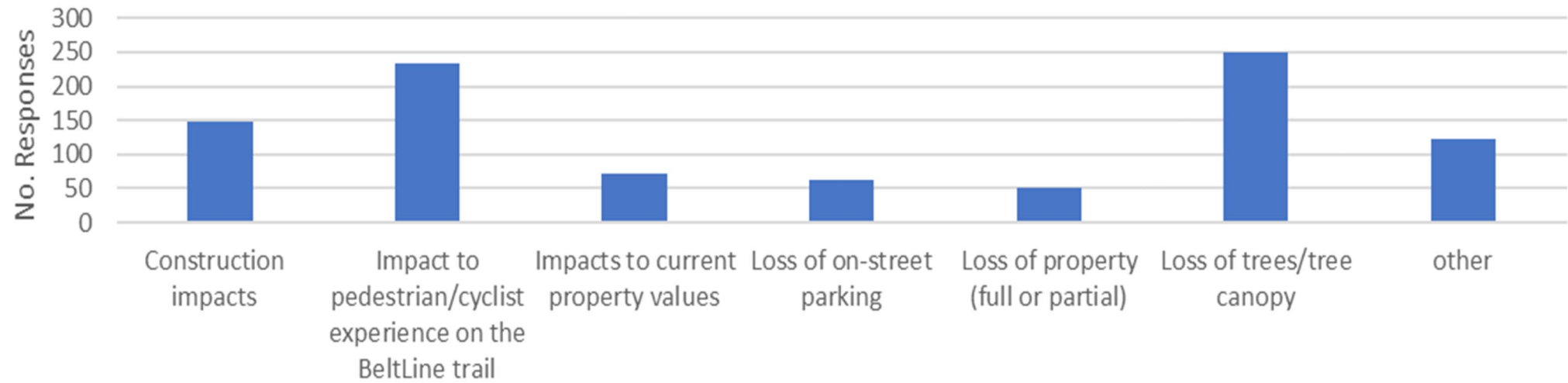
# Partial Closure of Streets

Q3: Locations for Partial Closure of Streets to Prioritize Pedestrian/Bike/Transit

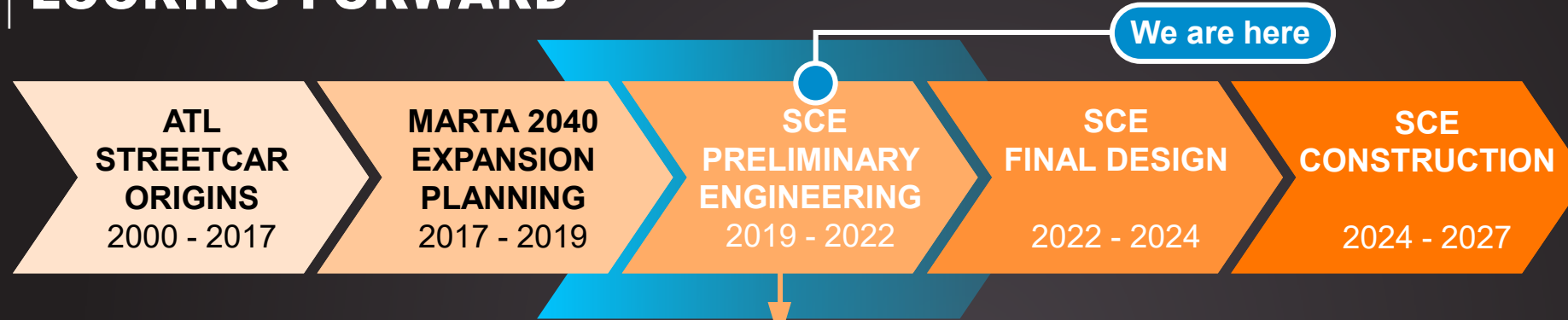


# Project Concerns

Q7: What concerns you the most?



# LOOKING FORWARD



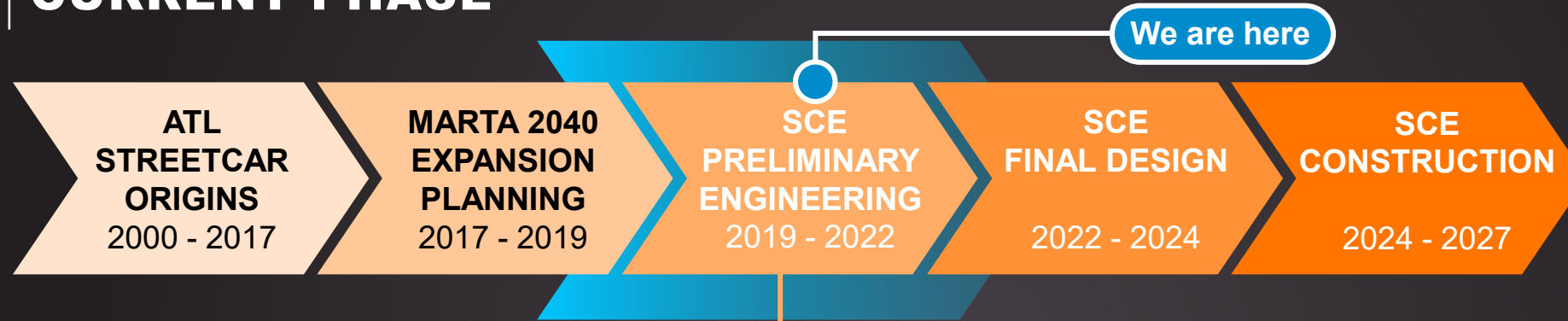
## Future Public Outreach

- Public Meeting #1: May 27, 2021
  - Public Meeting #2: Winter 2021
    - Edgewood Avenue closing discussion
    - Further details on graphics/renderings
    - User Experience
    - Survey responses from Public Meeting #1
  - Public Meeting #3: Spring 2022

KEY PROJECT  
MILESTONE

COMPLETE PRELIMINARY ENGINEERING  
SUMMER 2022

## CURRENT PHASE



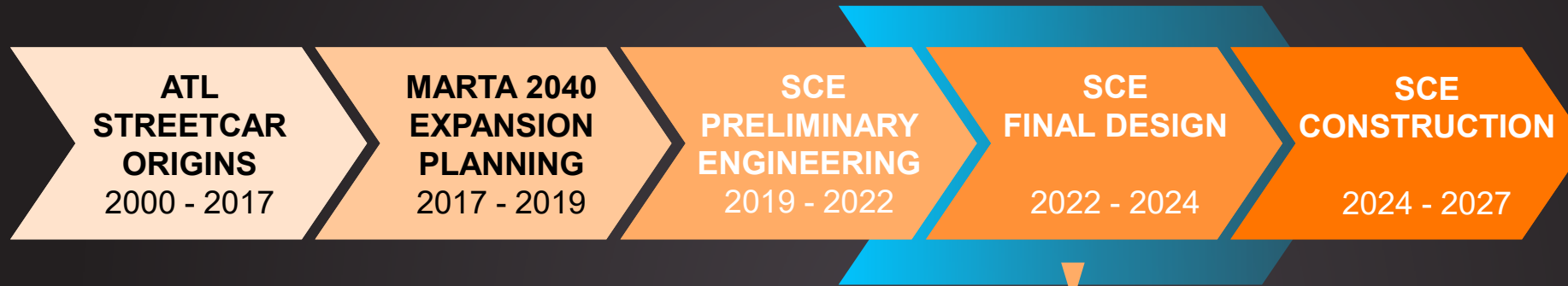
### Outstanding Tasks

- Complete field work (geotechnical, additional survey, subsurface utilities)
- Advance safety and security materials & documentation
- Complete conceptual VMF layout
- Continue evaluation of future expansion strategies

KEY PROJECT  
MILESTONE

COMPLETE PRELIMINARY ENGINEERING  
SUMMER 2022

## LOOKING FORWARD



### Final Design Tasks

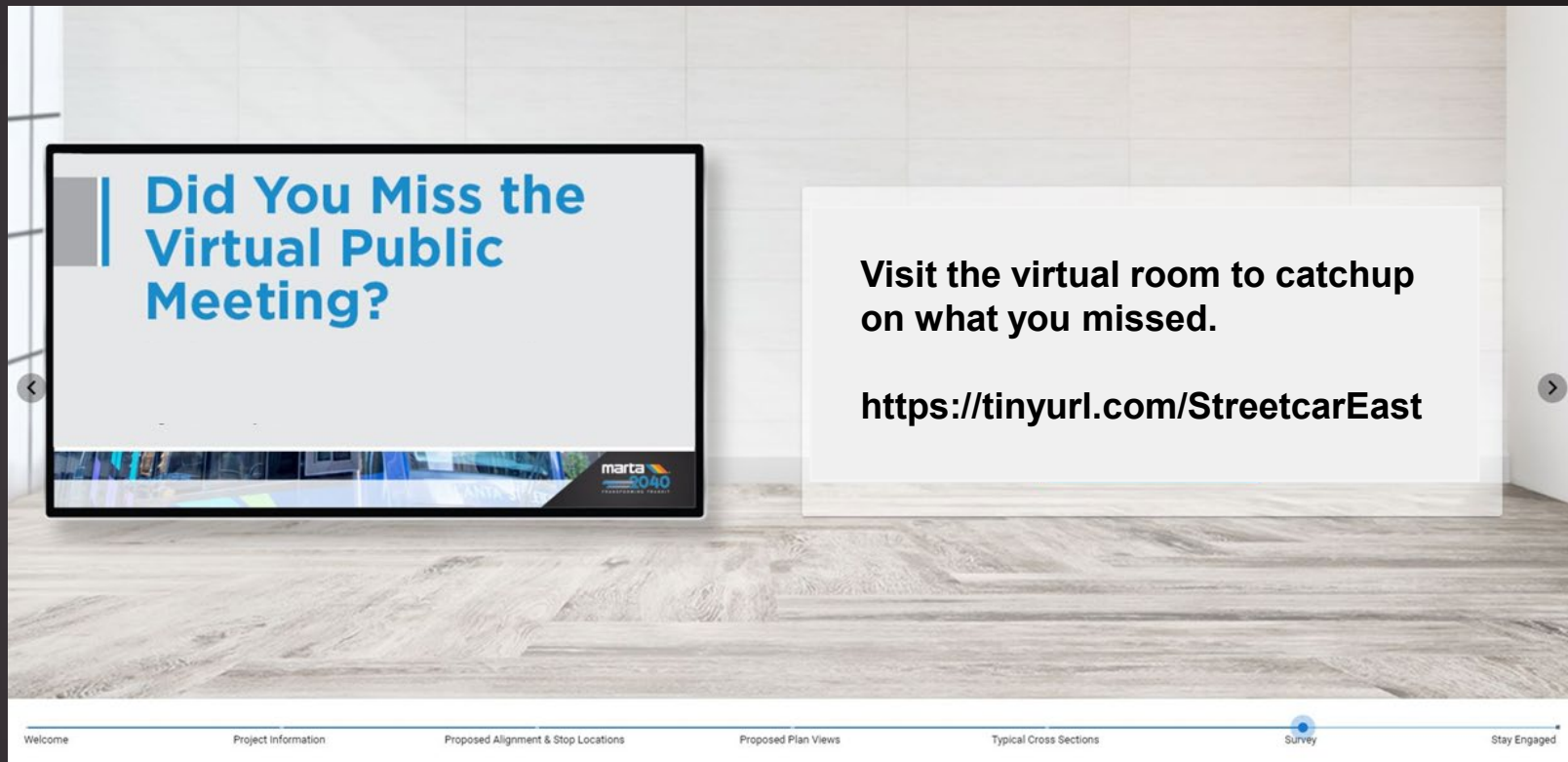
- Vehicle Maintenance Facility (VMF) modification design
- Detailed structural engineering
- Final drainage and grading
- Systems detailed design (Overhead Catenary Systems, traction power substation, etc)



# Thank You

## HOW CAN YOU STAY INVOLVED?

- Attend Our Virtual Meeting Room
- <https://tinyurl.com/StreetcarEast>



**Bryan Hobbs, MARTA Project Manager**  
[streetcareast@itsmarta.com](mailto:streetcareast@itsmarta.com)  
(404) 848-5733